

Application Note

Settings of the hyper terminal for the MAIB configuration

Revision: 1.0

01.04.2011

TABLE OF CONTENTS

| | |
|--|----------|
| 0. HISTORY | 3 |
| 0.1. Related Documents..... | 3 |
| 1. INTRODUCTION..... | 3 |
| 2. SYSTEM | 3 |
| 3. SETTING THE HYPER TERMINAL | 3 |

0. HISTORY

| Date | Revision | Author | Remarks |
|------------|----------|--------|---------------|
| 01.04.2011 | 1.0 | NAS | First Release |
| | | | |
| | | | |
| | | | |
| | | | |

Table 1: History

0.1. Related Documents

| Nr. | Name | Revision/Date | Filename | Remarks |
|-----|----------------------|------------------|--------------------------------|---------|
| 1 | instruction set MAIB | 1.2 / 31.03.2011 | Befehlssatz_MAIB_Kunde_1.2.pdf | |
| | | | | |
| | | | | |
| | | | | |
| | | | | |

Table 2: Related Documents

1. INTRODUCTION

This document describes the settings of the hyper terminal to configure the MAIB.

2. SYSTEM

1. Connect the MAIB to the supply.
2. Connect the programming adapter to the MAIB and to the USB port on computer.

3. SETTING THE HYPER TERMINAL

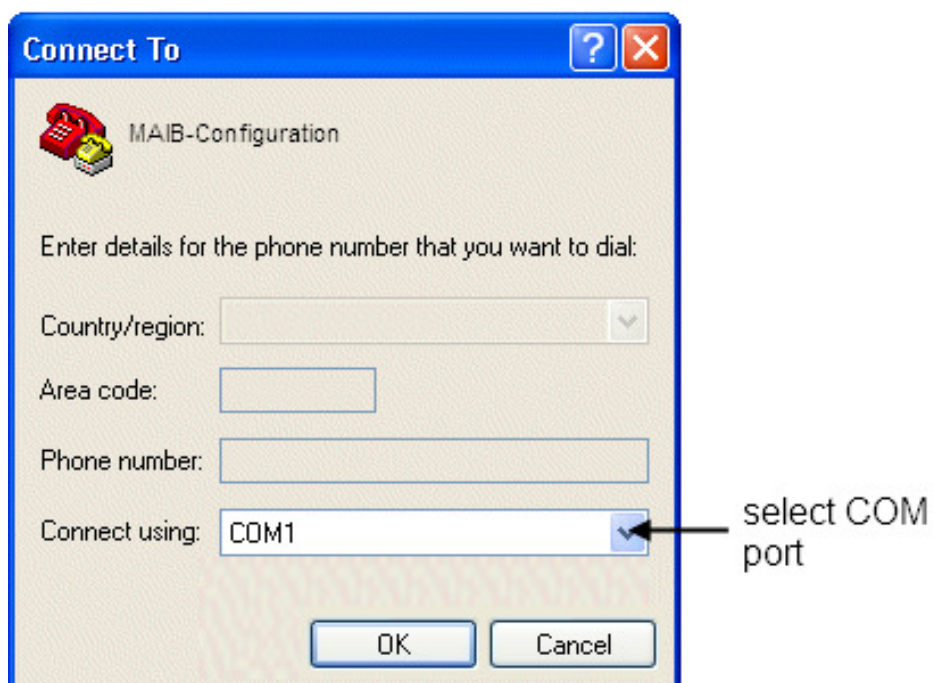
1. Start the hyper terminal.
 - start → All Programs → Accessories → Communications → HyperTerminal

2. Enter a name for the connection.



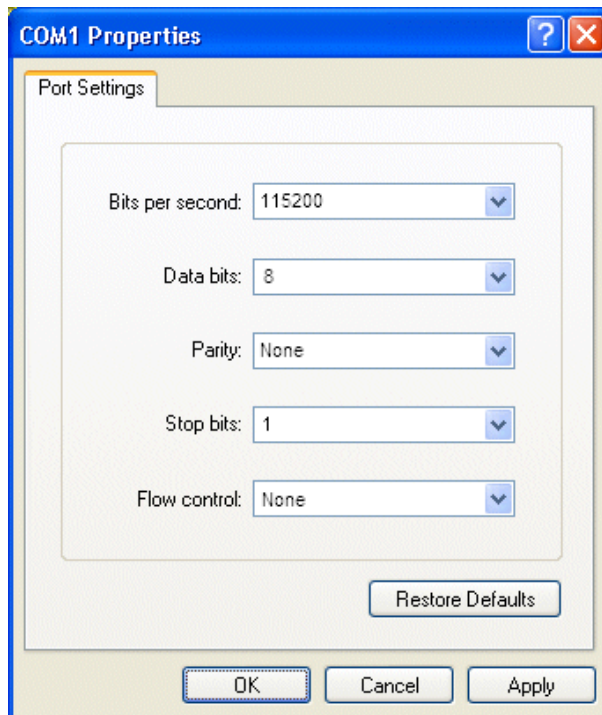
Click "**OK**".

3. Select the COM port.



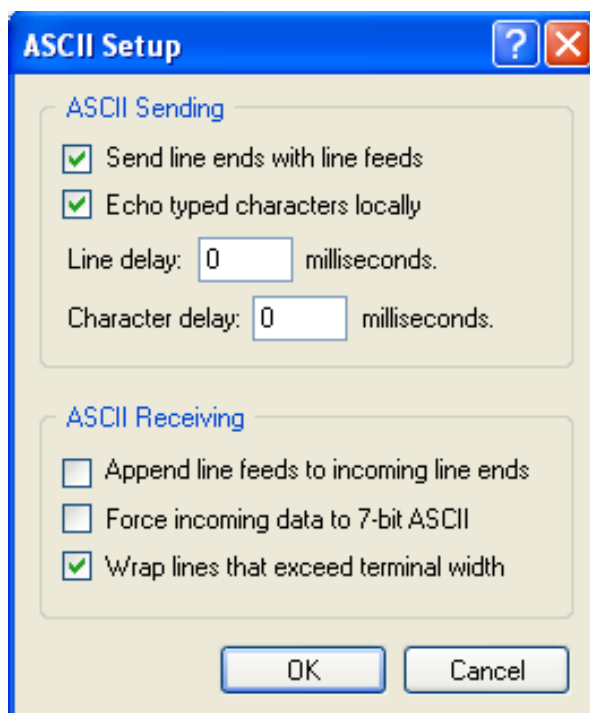
Click "**OK**".

4. Enter the following settings.



Click "**OK**".

5. Go to: File → Properties → Settings → ASCII Setup...
Enter the following settings.



Click "**OK**".

This enables all the required settings and the MAIB can be configured now.

These settings can be saved (File → Save As...) and used again for the next configuration of a MAIB.

Please note: If the MAIB is re-connected the COM port can change. If COM port changed look at page 4 (section 3).

END OF DOCUMENT